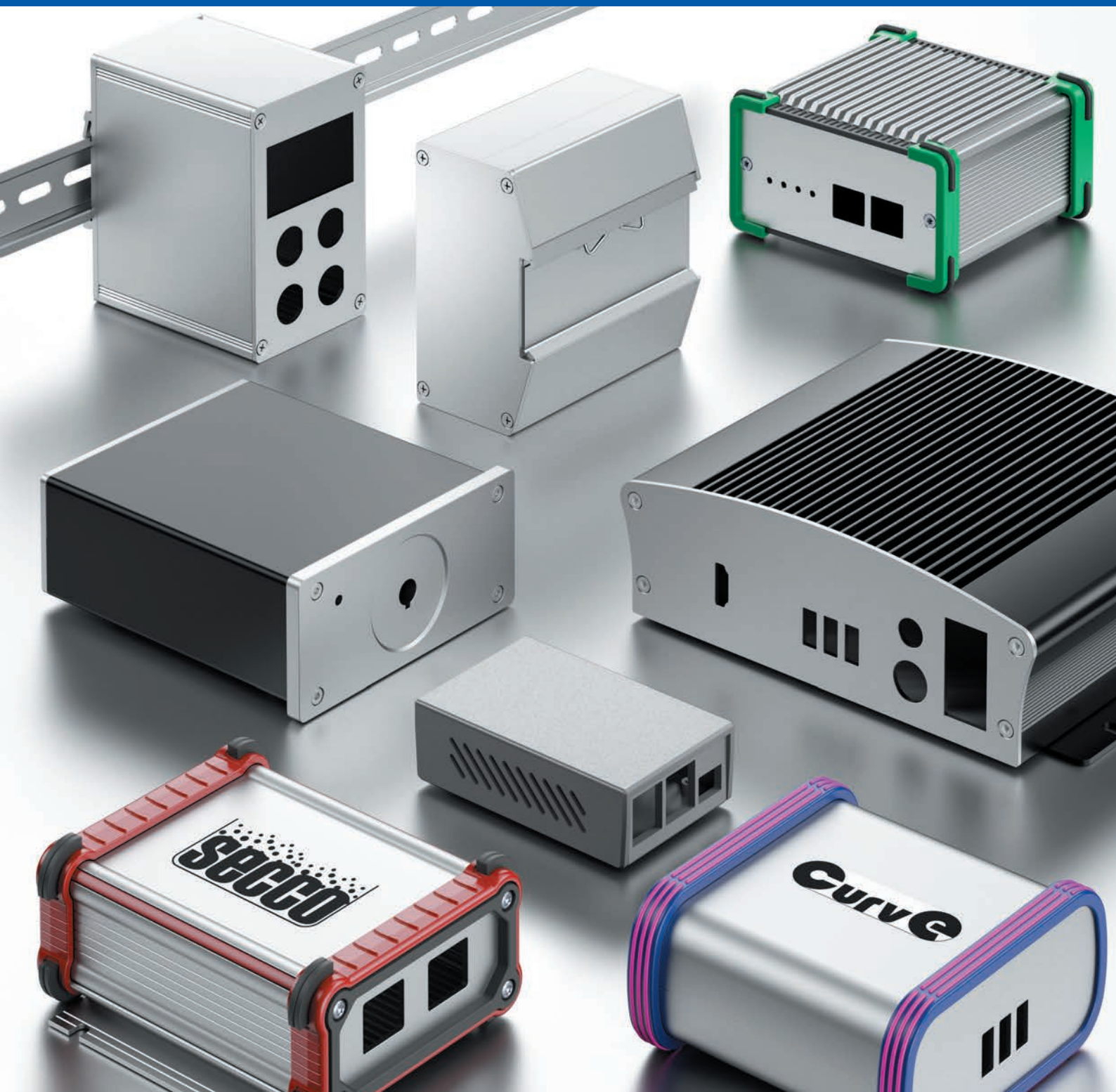


to cool to protect to connect



ISO 9001  
ISO 14001  
ISO 27001

**Profile mounting-, miniature aluminium and design cases**



### Profile mounting and shell enclosures

- versatile range of flexibly designable desk and shell enclosures made of aluminium for the accommodation of non-standard PCBs, parts and components
- with integrated guide grooves in 1 HP pitch
- customer-specific printing of the front panels
- special dimensions, machining and surface finishes according to your specifications



### Combination cases

- for all common euroboard formats with a variety of combination possibilities
- as table-top enclosure or for rail mounting
- wall or ceiling mounting by built-in mounting brackets
- integrated external cooling fins for better heat dissipation
- EMC-compliant versions due to electrically conductive surfaces and seals



### Tube cases

- universal tube cases with integrated guide grooves for the accommodation of PCBs in various dimensions or Eurocard format
- EMC-compliant versions with chromium-free transparently passivated, electrically conductive surfaces
- mounting brackets for use as desktop or wall-mounted enclosure
- special dimensions and surfaces on request



### Miniature aluminium enclosures

- enclosure construction as tube or half-shell profile with tongue and groove
- with integrated cooling fins
- internal guide grooves for mounting of printed circuits or mounting plates
- D-Sub connectors can be mounted without front panel
- cut-outs, special lengths and surfaces according to customer specifications





### SECCO Curve

- universal tube cases made of aluminium with shock-resistant plastic covers in elegant design
- guide grooves integrated in the profile to accommodate 100 mm Eurocards or non-standard printed circuit boards in 1.6 or 2 mm thickness
- protection class up to IP 67 can be achieved without the use of additional seals
- customised modifications, mechanical processing, surfaces and colour design possible



### FRAME

- use as a desktop enclosure in combination with an impact-resistant plastic cover and seal
- integrated guide grooves for accommodating circuit boards or non-standard components
- electrically conductive surfaces and gaskets as EMC-version on request
- special fabrications, machining, modifications and individual colour design of the plastic covers possible



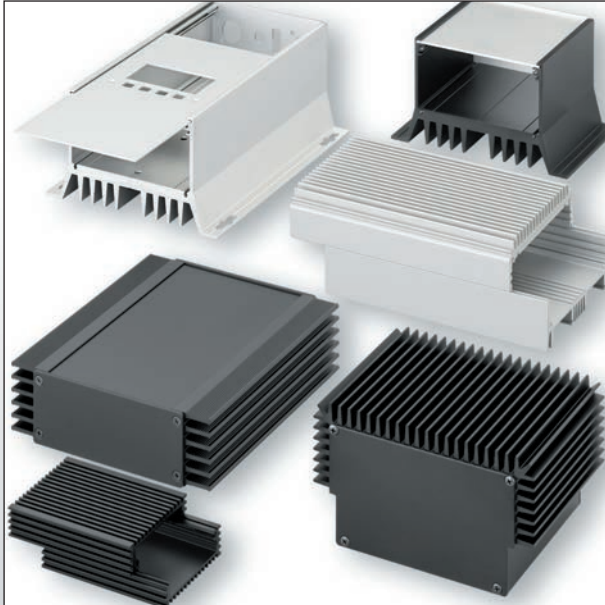
### CHAS

- unusual enclosure design in combination with shock-resistant plastic frame and integrated, non-slip feet
- horizontally and vertically variable aluminium enclosure with integrated guide grooves to accommodate any boards and components
- EMC-compliant design with electrically conductive surfaces and round cords
- realisation of customer specific designs



### E-trainer Rail

- aluminium housing for 100 mm Eurocards with integrated guide grooves with 5.08 mm pitch (1 TE)
- ET enclosures can be connected to each other (stackable) through their robust plastic frame
- ergonomic Rail housing suitable for mobile use or as desktop enclosure
- EMC-compliant versions due to electrically conductive surfaces (TP) and conductive seals (EDKO)
- special designs according to customer specifications possible



#### Cooling cases

- sturdy heat dissipation enclosures made of aluminium
- several hundred profiles always in stock
- very good thermal efficiency due to integrated cooling fins
- internal guide grooves to accommodate 100 mm Eurocards or other non-standardised assemblies
- additional machining, modifications and surfaces for your special requirements



#### Top-hat rail enclosure

- robust and secure mounting of enclosures or heatsinks on the top-hat rail
- directly integrated in the enclosure or as individual mounting rail fastening made of aluminium and plastic
- matching contour with pressed-in wire form spring for fixing on top-hat rails of material thickness from 1 to 2.3 mm
- mechanical modifications and special designs according to customer specifications



#### Accessories for enclosures

- screw-on and plug-in feet
- feet for use as console enclosures
- seals for EMC and IP applications
- round and rectangular ventilation panels
- guide rails with threaded inserts
- cable entry grommets and mounting material



#### Development and construction

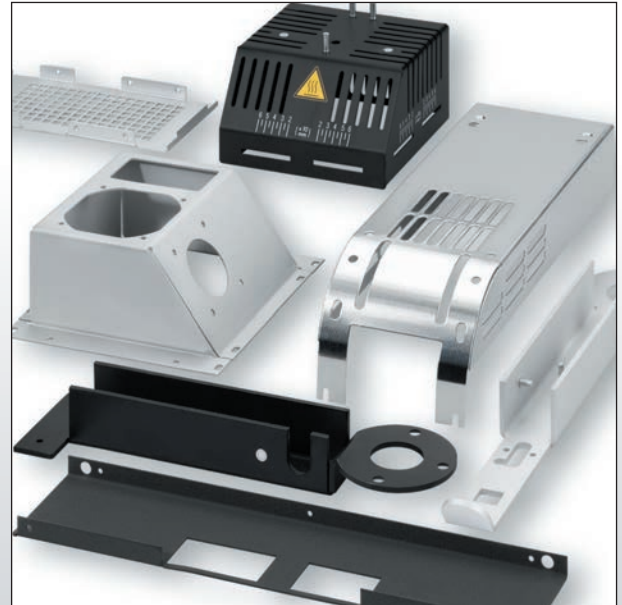
- competent partner with experience since 1968
- innovative product development, product-specific support by application engineers
- design assistance, feasibility analyses and product optimisation
- design support and creation of drawings
- prototype construction and pilot series





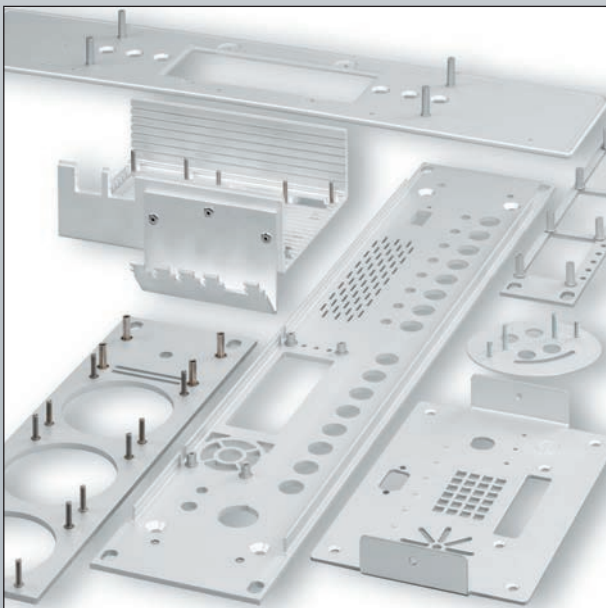
#### Printing

- durable printing using UV inkjet printer, screen printing or pad printing in our own print shop
- outstanding image quality due to the latest printing technology
- Highest reproducibility of colour tones according to colour charts such as RAL, HKS and Pantone
- printing on a wide variety of materials, such as aluminium, plexiglass and plastics
- creation of artwork according to your specifications



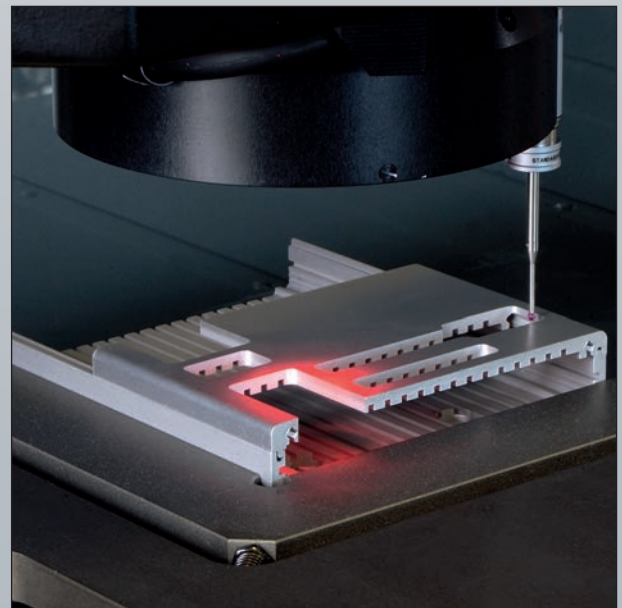
#### Sheet metal forming

- fast and efficient sheet metal processing according to customer specifications using state-of-the-art CNC punching and bending machines
- milled openings and outer contours for highest quality requirements
- simple data exchange through CAD-CAM drawing and programming systems of the latest generation



#### Additional machining options

- pressing in or welding of threaded bolts, threaded bushes and flat plugs
- sandblasting for homogeneous surfaces by means of automatic blasting machines
- stamped and machined sheet metal bent parts
- high-quality and very precisely milled contours
- individual machining possibilities



#### Quality and environmental management

- consistent quality policy according to DIN EN ISO 9001 and ISO 14001
- continuous increase in customer orientation
- identification of future market needs
- continuous development of effectiveness of processes concerning the quality management system
- adherence to the company guidelines by permanent staff training

Please send us:



- Catalogue **f.cool**  
Extruded heatsinks  
LED heatsinks  
Cooling aggregates  
Thermally conductive material



- Catalogue **f.case**  
Cases  
19" technology  
Accessories



- Catalogue **f.con**  
Sockets  
Connectors  
Brackets



- Catalogue **f.news**  
Novelties

# Please return by fax!

## +49 23 51 4 57 54

Company: \_\_\_\_\_

Attn.: \_\_\_\_\_

Dept.: \_\_\_\_\_

Street: \_\_\_\_\_

Post code/city: \_\_\_\_\_

Phone: \_\_\_\_\_

Fax: \_\_\_\_\_

E-mail: \_\_\_\_\_

Please also send data to following place:

other company:

\_\_\_\_\_

same company to the attention of:

\_\_\_\_\_

No, thank you. We do not have any need for your data. Please remove us from your mailing list.

We thank you for helping us to avoid waste.

# fischer

## elektronik

**to cool to protect to connect**

**Fischer Elektronik GmbH & Co. KG**

Nottebohmstraße 28

58511 Lüdenscheid

GERMANY

fon +49 2351 435-0

fax +49 2351 45754

info@fischerelektronik.de

www.fischerelektronik.de

